

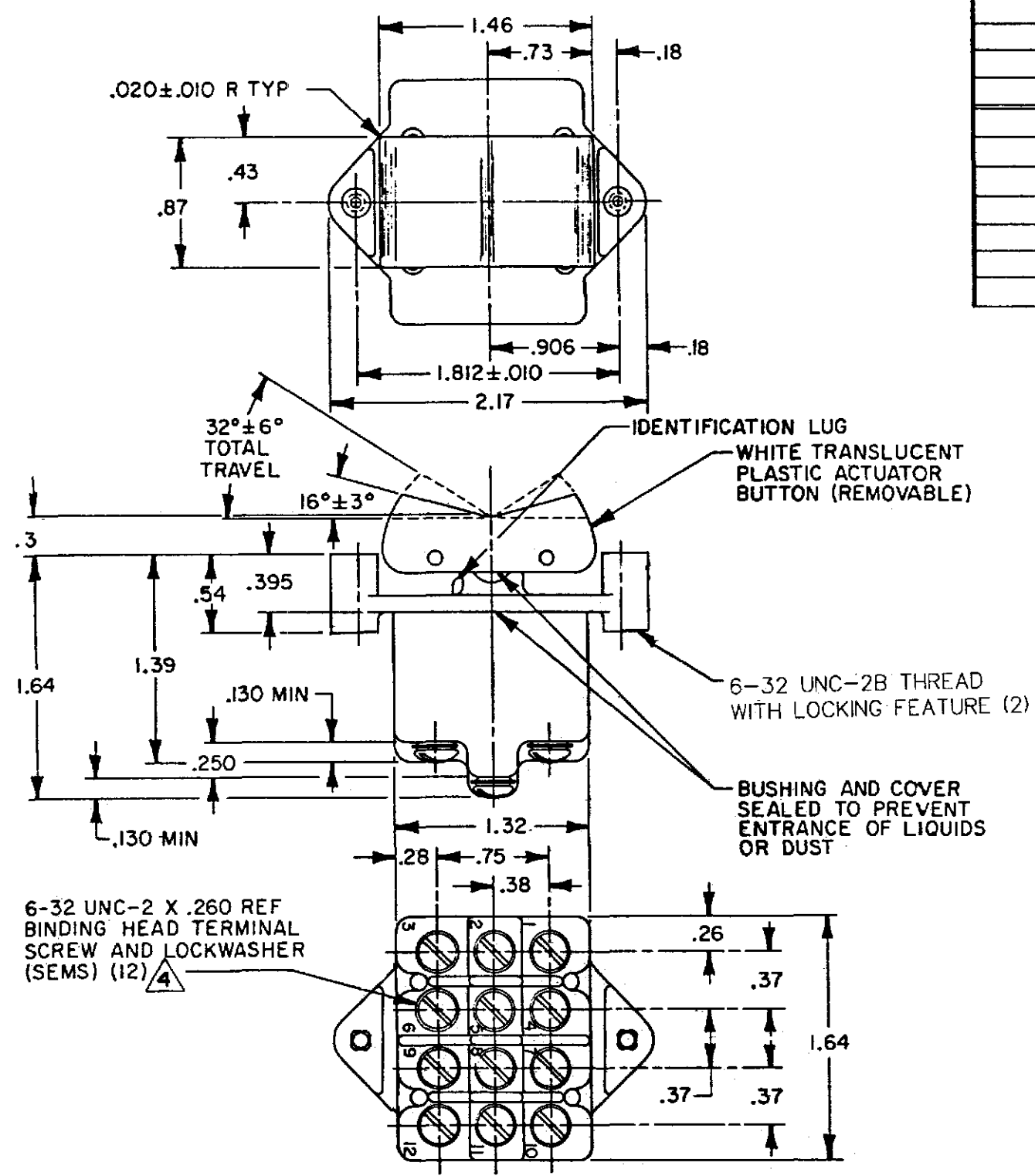
REPLACES 4TP201 SERIES
 RELEASE NO. CO-78497
 CHECK
 REVISIONS
 A CO-8449 G J W 13 MAY 97
 B CO-95303 C S L 15 NOV 99
 C CO-94416 J J A 29 NOV 99
 D 203771 C S L 18 SEP 01
 CHECK
 DRAWN G J W 23 MAY 97
 RASTER

MICRO SWITCH
 a Honeywell Division
 FED. MFG. CODE 91929

**SWITCH-TOGGLE
 FLUSH KEY**

CATALOG LISTING
**4TP201 SERIES
 CHART 1**

THIS DRAWING COVERS A PROPRIETARY ITEM AND IS THE PROPERTY OF MICRO SWITCH, A DIVISION OF HONEYWELL. THIS DRAWING IS NOT TO BE COPIED OR USED WITHOUT THE APPROVAL OF MICRO SWITCH



5	CATALOG LISTING	3 CIRCUIT MADE WITH BUTTON DEPRESSED ON		
		LUG SIDE (1-2, 4-5, 7-8, 10-11)	CENTER (1-2, 4-5, 7-8, 10-11)	OPPOSITE LUG (2-3, 5-6, 8-9, 11-12)
FAA-PMA	(B)	ON	OFF	ON
	(D)	OFF	NONE	ON
	4TP201-3	ON	NONE	ON
	4TP201-2I	NONE	OFF	ON
	4TP201-3I	NONE	ON	ON
	4TP201-4	MOM OFF	NONE	ON
	(B)	MOM ON	OFF	ON
	4TP201-6	MOM ON	NONE	OFF
	4TP201-7	MOM ON	OFF	MOM ON
	4TP201-8	MOM ON	NONE	ON
	4TP201-5I	NONE	ON	MOM ON
	4TP201-6I	MOM ON	OFF	NONE

ELECTRICAL DATA	
L191	15A 125, 250, 277 VAC 1/2HP 125 VAC 1HP 250, 277 VAC 5A 125 VAC "L"
UL CE	
L192	10A 125, 250, 277 VAC 1/4HP 125 VAC, 1/2HP 250, 277 VAC 3A 125 VAC "L"
UL CE	

THIRD ANGLE PROJECTION
 SCALE FULL
 DO NOT SCALE PRINT
 UNLESS OTHERWISE SPECIFIED TOLERANCES ARE
 ONE PLACE (.0) ±.030
 TWO PLACE (.00) ±.015
 THREE PLACE (.000) ±.005
 ANGLES ±
 WEIGHT .22 LB EST

- NOTES
 1 - MICRO SWITCH CATALOG LISTING MARKED ON SIDE OF SWITCH
 2 - THESE SWITCHES WILL WITHSTAND TEMPERATURE OF 160°F
 3 - APPLIES ONLY TO "ON" AND "MOMENTARY ON" POSITIONS
 4 - SCREWS FURNISHED UNASSEMBLED
 5 - FAA-PMA MUST BE MARKED ON SWITCH